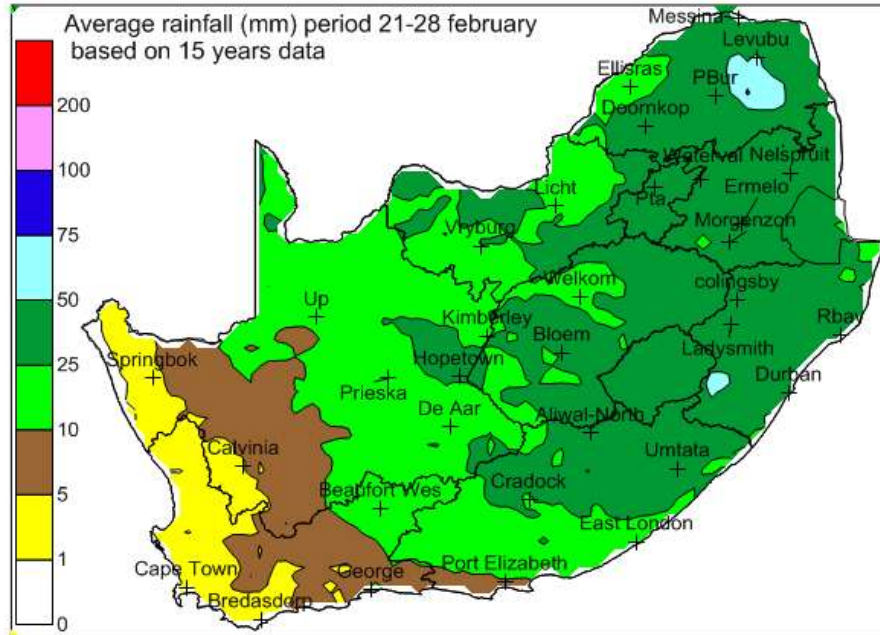
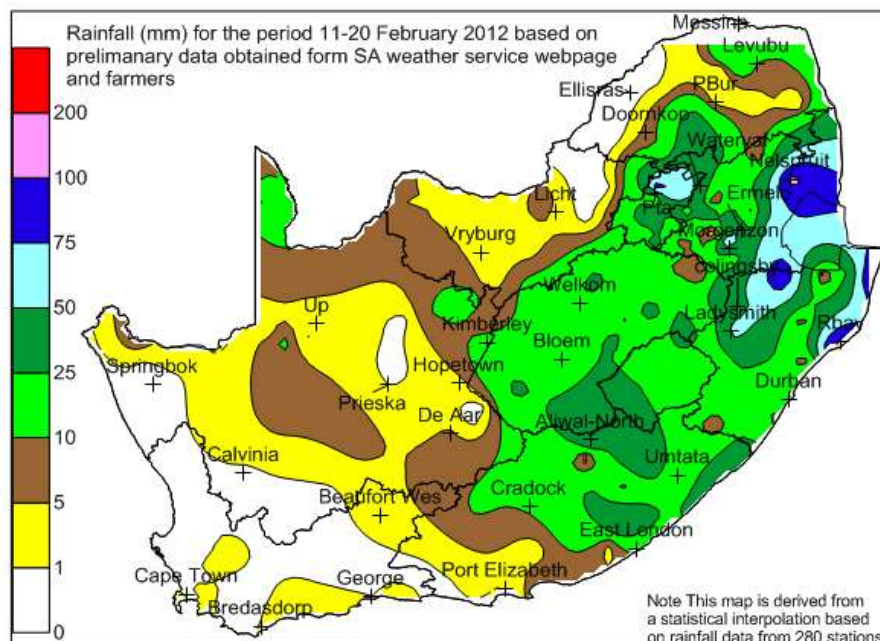


The forecast is based on open source models mainly for the RSA maize and wheat growing areas as well as the USA corn areas from March/April.

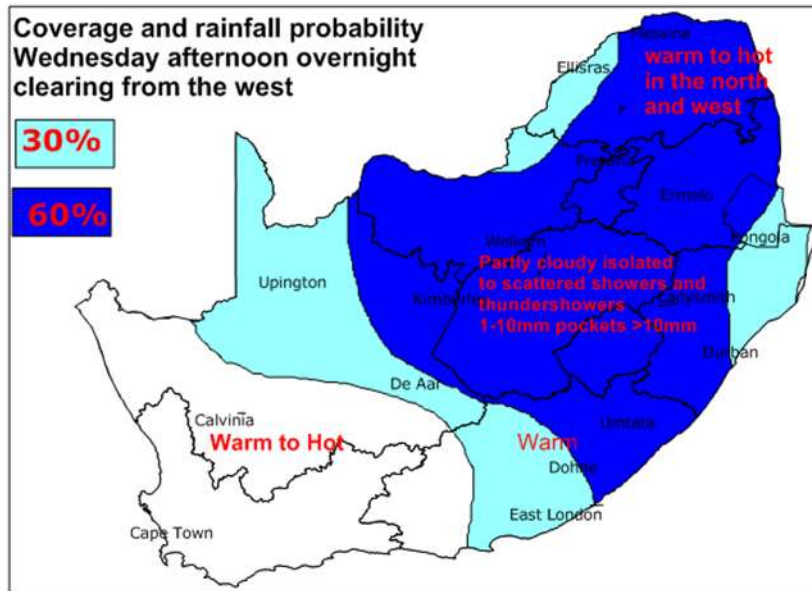
Forecast Period 22 – 28 February 2012



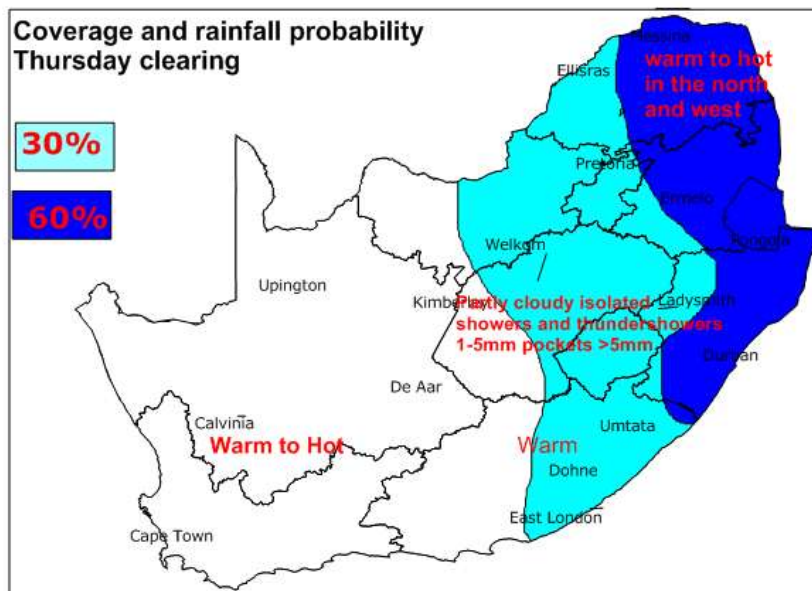
Average rainfall (mm) period 21-28 February 2012. Normal to below normal rainfall are expected



Rainfall (mm) for period 21-20 February 2012



Coverage and rainfall probability Wednesday afternoon evening shifting east and north-eastwards while clearing from the west.



Coverage and rainfall probability Thursday shifting east and northeast while clearing from the west.

Friday/Sunday: Mainly fine and warm to hot in the north and west with isolated afternoon and evening showers 0-5mm in places over the eastern half of the maize area.

Outlook: Monday –Friday: Mainly fine and warm to hot in the north and west. Isolated afternoon and evening showers and thundershowers 0-5mm pockets >5mm are expected over northern eastern cape southern KZN shifting eastwards over the maize area by Wednesday.

La Niña next update 28 February

The forecast contained in this report has been derived from open source data satellite images and other sources which we believe are reliable. Grainvest (Pty) Ltd does not guarantee that such information is accurate or complete and it should not be relied upon as such. Any opinions expressed reflect judgments at this date and are subject to change without notice. Readers are urged to exercise their own judgment. Any reproduction or retransmission of this report without the express written consent of Grainvest (Pty) Ltd is strictly prohibited

